

**iNA™**

**INvision**  
Precision Medicine

# Automated Nucleic Acid Purification Platform

Whole Blood DNA, Tissue DNA,  
Cell-Free DNA, Bacterial DNA,  
Forensic DNA, Plant DNA,  
Tissue RNA, Viral RNA,  
Total RNA and more.



**iNA16™**

**iNA24™**

# Clinical & Research Targets

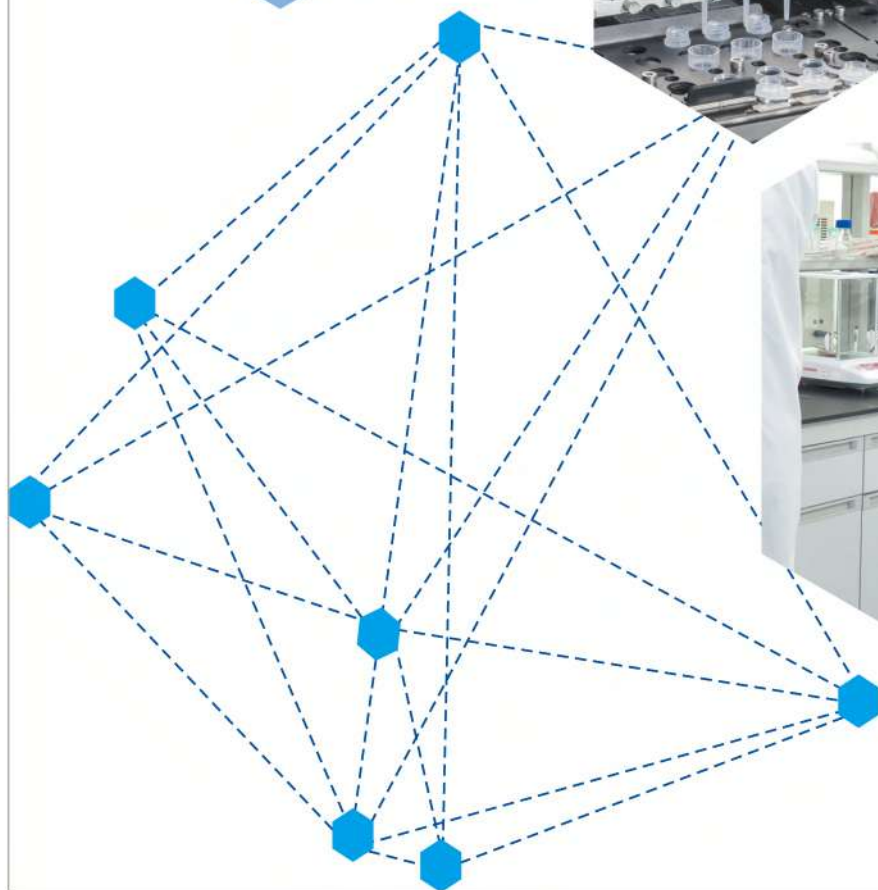
**INvision**  
Precision Medicine



**DNA**

**NA**

**RNA**



\*different device color version

# iNA™ Core Technologies

**INvision**  
Precision Medicine

# 1

High Precision Liquid Handling Procedures

N

No liquid residue issues

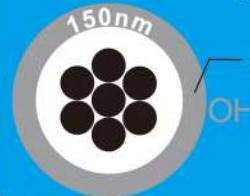
# 3

Separable Reagent Strips

No cross contamination

# 4

Advanced Magnetic Nano Beads



Lightweight Silicone coating

Superior Results in Yield & Purity

# 2

Clean and Worry-free Operation

Lysis Binding Wash

Elute Only

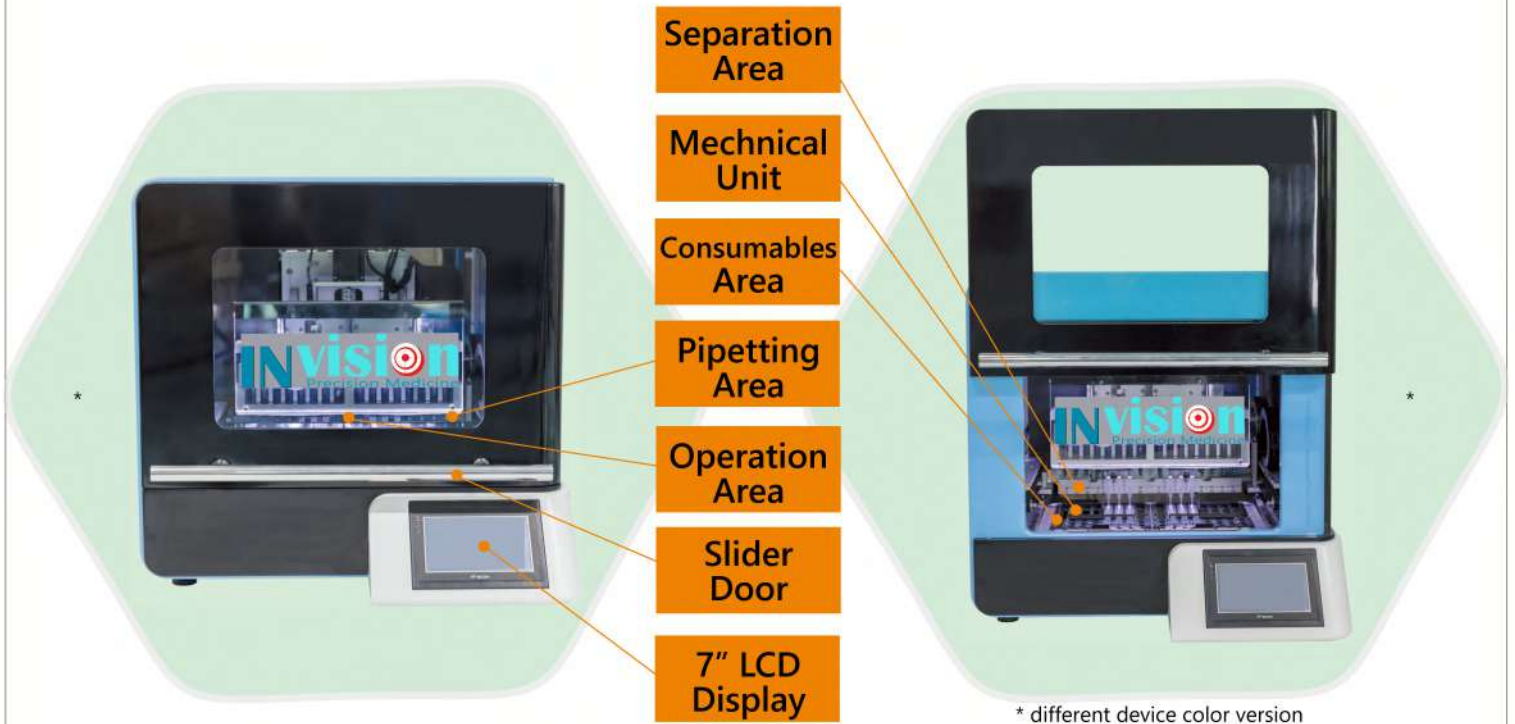
Double Filter Tips

Lowest Maintenance without Extra Costs

# 5

Rubber Coupling

# iNA™ System Components



## Ready-to-go in 3 easy steps:



High-Class Consumables	Tip Frame	Reagent Frame	Reagent Cartridge
Sample Tip	Elute Tip with Cap	Filter Tip & Holder	Power Cord

\*different device color version

# iNA16™

## Introduction

**INvision**  
Precision Medicine

iNA16™ is a fully automated nucleic acid extraction platform that can process between 1 and 16 biological samples of various types simultaneously per run. The platform is based on the recognized Liquid Handling and Magnetic Beads (Silica coated) technologies, and replaces traditional manual extraction methods by minimizing human interaction mistakes, as well as avoiding cross-contamination. High operation accuracy is resulting in superior elute products, suitable for any subsequent use in demanding clinical or research applications. The patented independent elution head design of iNA16™ is guaranteeing users residue-free elute, and improves the purity of processed samples. A large-sized touch-screen display with graphical user interface is providing users an easy and convenient handling experience. iNA16™ does not require long training processes nor maintenance.



# iNA16™ Specifications



## Device Specifications

**Model Name:** iNA16™

**Cat. No.:** IN-NA-16

**UV Lamp:** 8 W (>1,000 h+)

**Heating Block Temperature:** Up to 100 °C

**LCD Display:** 7" multi color touch-screen

**Power Voltage:** AC 100-240 V

**Electrical Frequency:** 50/60 HZ

## Operating Parameter

**Sample Throughput:** 1-16 simultaneously

**Sample Forms:** Liquid and most solid biological samples can be directly processed

**Operating Time:** 35-90 minutes (depending on sample type and operation program)

**Sample Volume:** 200/400/1200 µl (depending on kit)

**Elution Volume:** 30/60/100/150/200 µl

**Expected Yield:** 6 pg of genomic DNA can be extracted per 200 µl of whole blood

**Expected Purity:** OCHS A260/A280=1.8±1



## Operating Environment

**Transport/Storage Temperature:** RT

**Operating Temperature:** RT

## System Features

**Features:** Automatic Pipette pumping, Double Tip technology, Magnetic bead adsorption in pipette tip

**Accessories:** Tube Rack, Reagent Bar Rack, Test Kit (Contact us for the latest updates)

# iNA24™

## Introduction

**INvision**  
Precision Medicine

iNA24™ is a fully automated nucleic acid extraction platform that can process between 1 and 24 biological samples of various types simultaneously per run. The platform is based on the recognized Liquid Handling and Magnetic Beads (Silica coated) technologies, and replaces traditional manual extraction methods by minimizing human interaction mistakes, as well as avoiding cross-contamination. High operation accuracy is resulting in superior elute products, suitable for any subsequent use in demanding clinical or research applications. The patented independent elution head design of iNA24™ is guaranteeing users residue-free elute, and improves the purity of processed samples. A large-sized touch-screen display with graphical user interface is providing users an easy and convenient handling experience. iNA24™ does not require long training processes nor maintenance.



# iNA24™ Specifications



## Device Specifications

**Model Name:** iNA24™  
**Cat. No.:** IN-NA-24  
**UV Lamp:** 8 W (>1,000 h+)  
**Heating Block Temperature:** Up to 100 °C  
**LCD Display:** 7" multi color touch-screen  
**Power Voltage:** AC 100-240 V  
**Electrical Frequency:** 50/60 HZ



## Operating Parameter

**Sample Throughput:** 1-24 simultaneously  
**Sample Forms:** Liquid and most solid biological samples can be directly processed  
**Operating Time:** 50-90 minutes (depending on sample type and operation program)  
**Sample Volume:** 200/400/1200 µl (depend. on kit)  
**Elution Volume:** 30/60/100/150/200 µl  
**Expected Yield:** 6 pg of genomic DNA can be extracted per 200 µl of whole blood  
**Expected Purity:** OCHS A260/A280=1.8±1

## Operating Environment

**Transport/Storage Temperature:** RT  
**Operating Temperature:** RT

## System Features

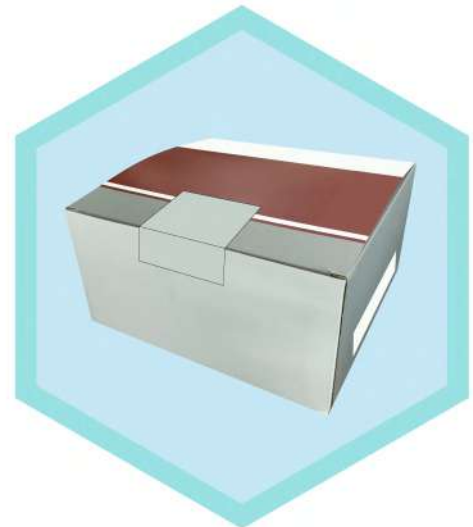
**Features:** Automatic Pipette pumping, Double Tip technology, Magnetic Bead adsorption in pipette tip  
**Accessories:** Tube Rack, Reagent Bar Rack, Test Kit (Contact us for the latest updates)



# iNA™ Reagent Kits & Applications

**INvision**  
Precision Medicine

With a wide assortment of pre-packed reagent kits, iNA16™ and iNA24™ are suitable for any lab, in clinical diagnostics, life sciences, research, forensics, food safety, veterinary, and more. iNA™ Reagent Kits contain all necessary parts for 96 or 72 samples, and can be easily disposed because INvision uses only non hazardous materials and liquids.



No.	Cat. No.	Item Name	Size
1	IN-NA-101	iNA™ Genomic DNA Whole Blood Extraction Kit	96 preps
2	IN-NA-103	iNA™ Genomic DNA Tissue Extraction Kit	96 preps
3	IN-NA-104	iNA™ Genomic DNA Cultured Cells Extraction Kit	96 preps
4	IN-NA-105	iNA™ Genomic DNA Plant Extraction Kit	96 preps
5	IN-NA-201	iNA™ Genomic DNA FFPE One-Step Extraction Kit	72 preps
6	IN-NA-202	iNA™ Total RNA FFPE One-Step Extraction Kit	72 preps
7	IN-NA-301	iNA™ Total RNA Blood Extraction Kit	96 preps
8	IN-NA-302	iNA™ Total RNA Tissue Extraction Kit	96 preps
9	IN-NA-401	iNA™ Viral Nucleic Acid Extraction Kit	96 preps
10	IN-NA-402	iNA™ Viral Nucleic Acid Extraction Kit (Large Volume)	96 preps
11	IN-NA-501	iNA™ Bacterial DNA Kit (Gram +/-)	96 preps
12	IN-NA-601	iNA™ Cell-Free DNA Extraction Kit (1.2 mL)	96 preps
13	IN-NA-602	iNA™ Cell-Free DNA Extraction Kit (2.0 mL)	96 preps
14	IN-NA-603	iNA™ Cell-Free DNA Extraction Kit (4.0 mL)	96 preps

**Contact us for further information on applications and future developments.**



INvision Precision Medicine, a business unit of  
**Instant NanoBiosensors Co., Ltd.**

- 
-  No.459, Chongyang Road,  
Nangang Dist., Taipei, 115, Taiwan
  -  <http://www.instantnano.com>  
[BD@instantnano.com](mailto:BD@instantnano.com)
  -  +886 (0)2 2653 5955
  -  +886 (0)2 2653 6955